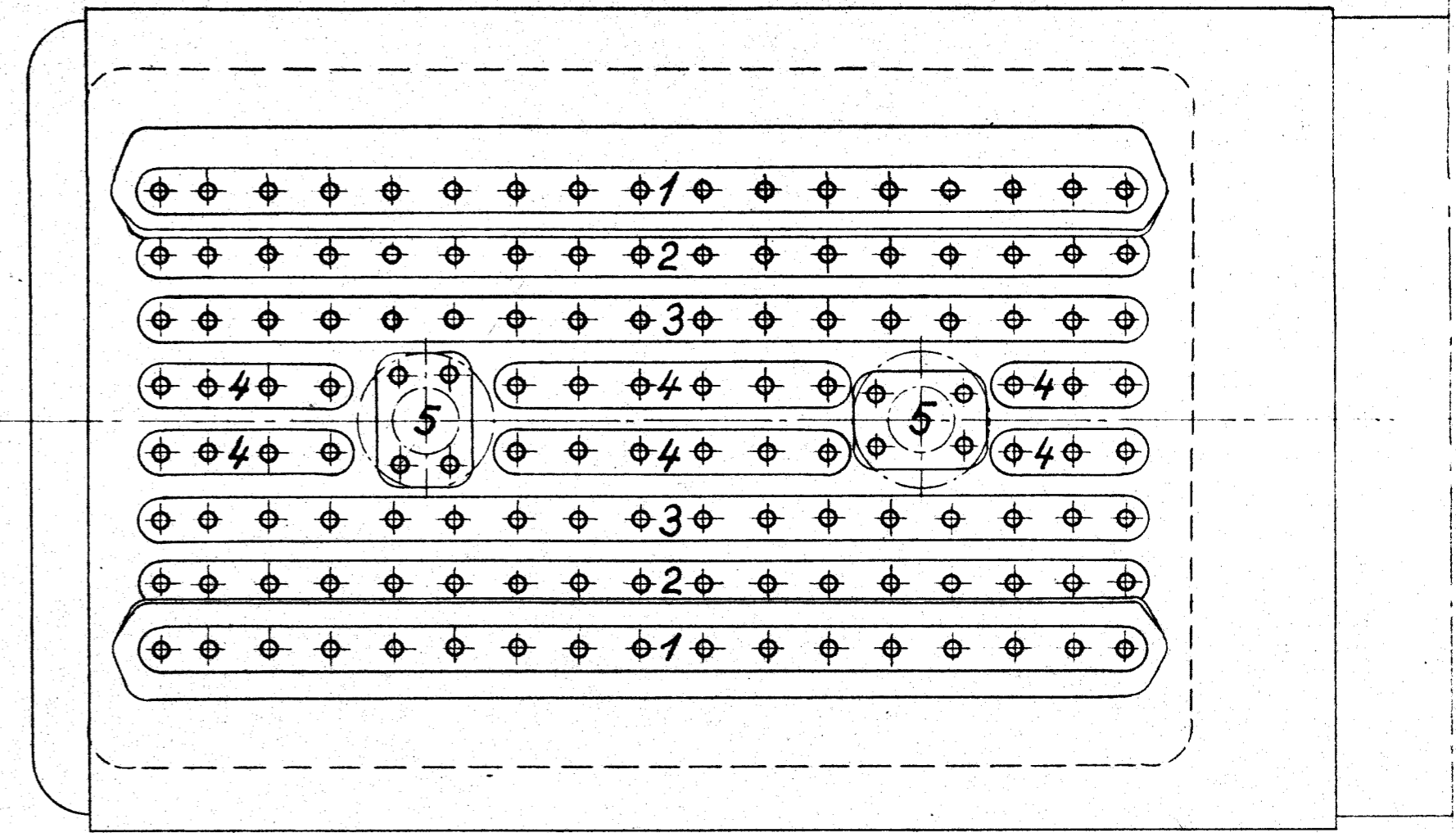
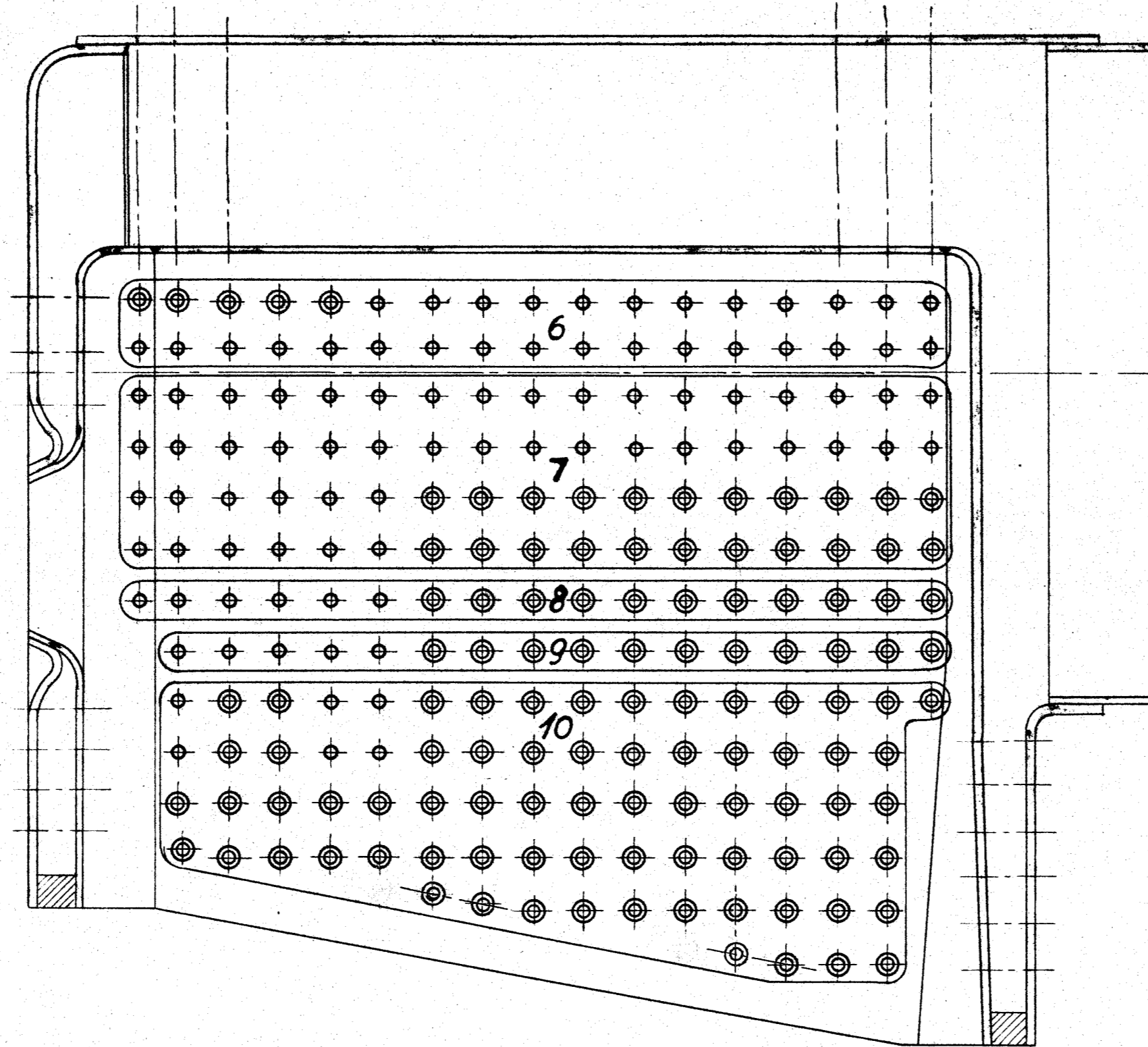
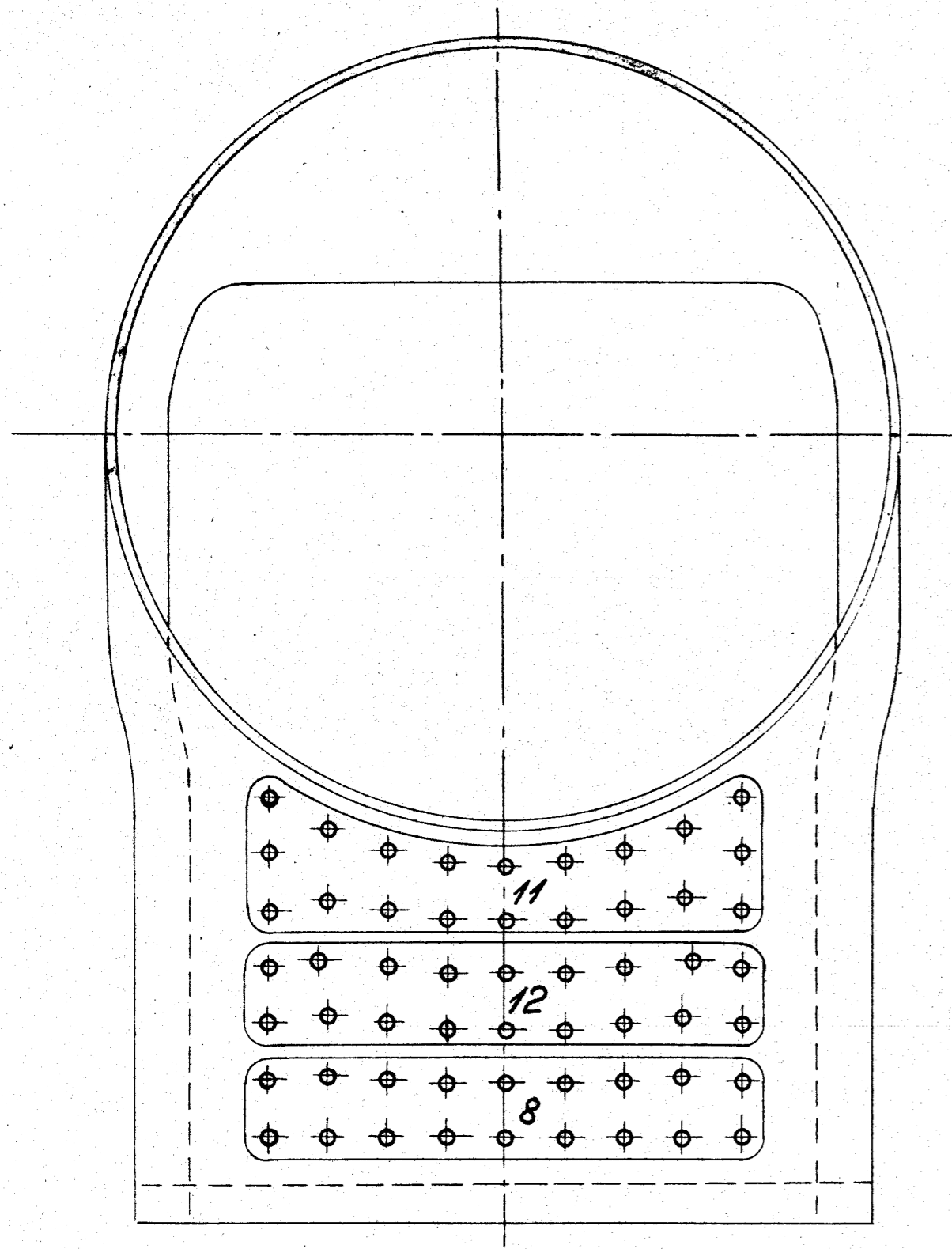
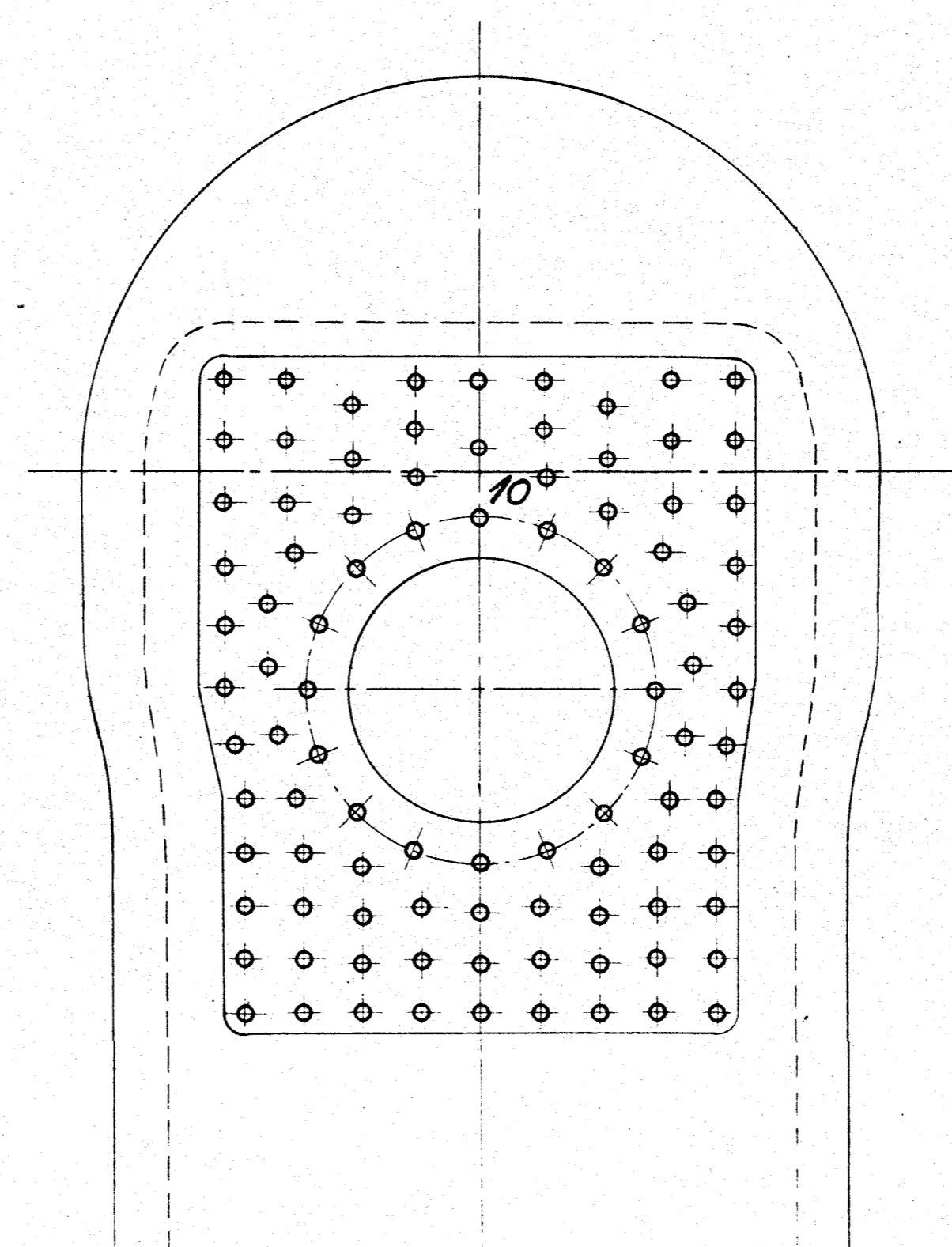
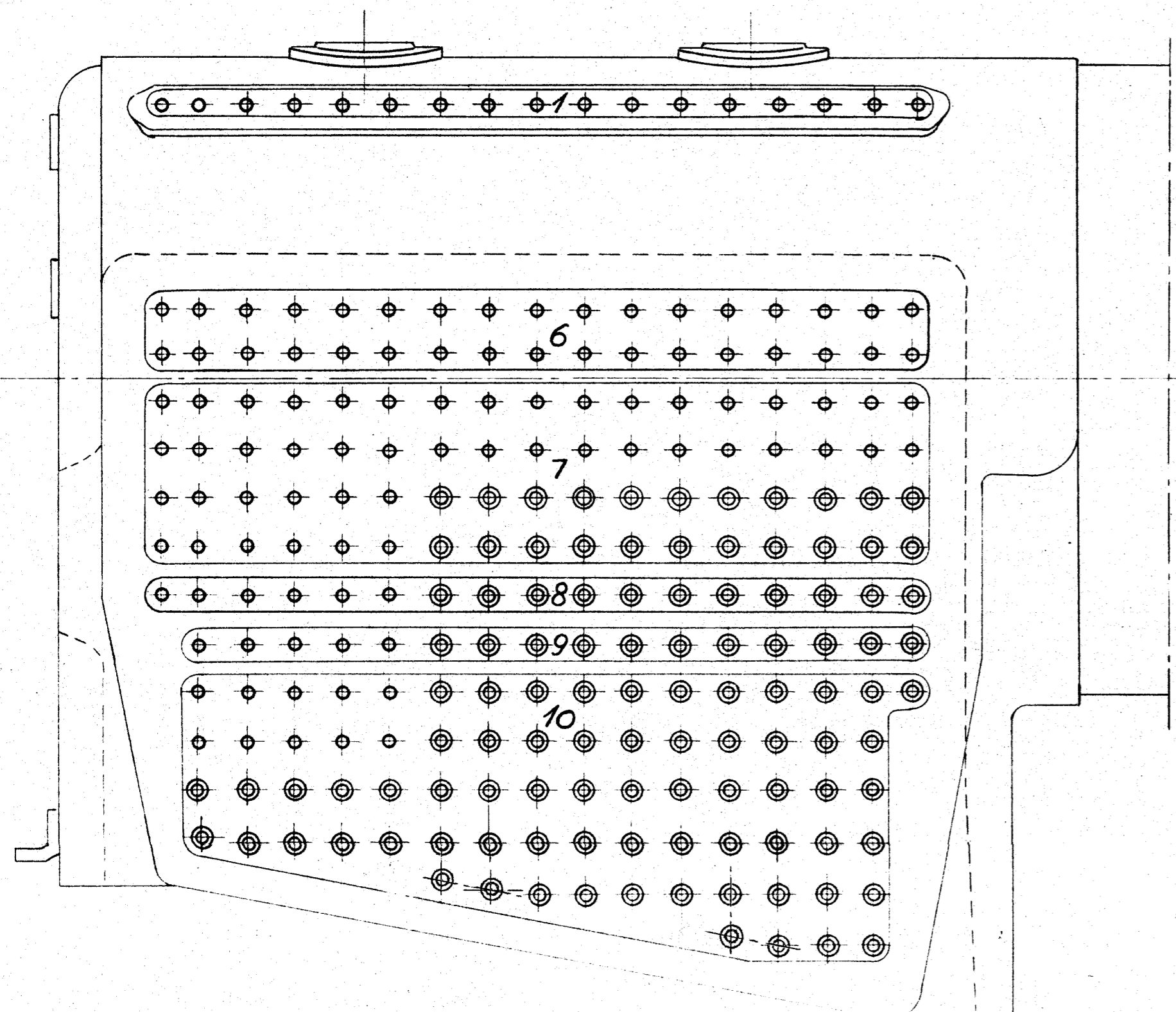


Set ovenfra



De med \odot mærkede Støttebolte bores helt igennem og proppes tæt udvendig.



For Støttebolte se Tegn. Q_{II} 9L-2.280
Positionsnumre henfører til denne

FORANDRINGER			
c. Støttebolte fjernet og flyttet	18/4-77	S.F.	
d. Andr. for 9L-2.280b.			
a. Antal Foreget	1/2-41	J.B.	
Anbringelse af Støttebolte D-Tenderloko. Litra. Q			Q_{II} 2.480 b.c.

Tegn. P. Strichs
1/11-77
Indr.
Date